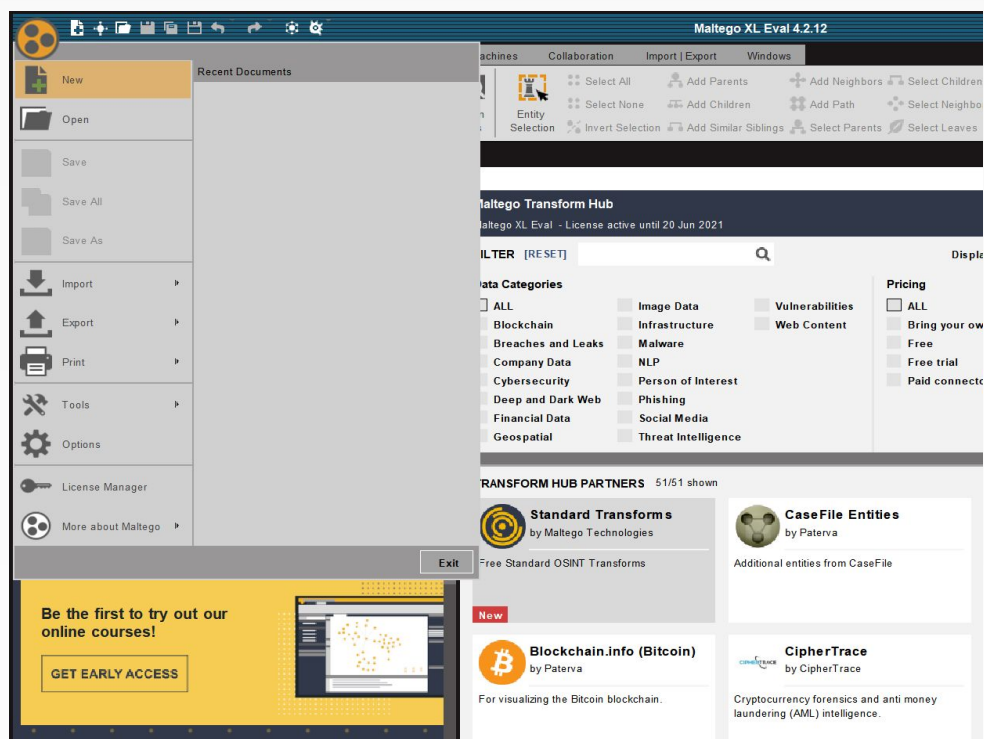


01 | Charting My First Maltego Graph

If you have already played around with Maltego to create your first graph, read on about conducting a level 1 network footprint investigation in [the next Beginners Guide article](#).

Creating Our First Maltego Graph

Let us create our first Maltego graph by clicking on the Maltego button in the top left corner and choosing New from the main menu. This creates a new graph for us to work on.



Terms of service

This document belongs to Cyber Academy L.L.C as its intellectual property. No part of this publication may be reproduced, stored in a retrieval system, or transmitted, in any form or by any means, without the prior permission in written form, except when used for internal business purposes of the client. The physical and digital copies of the report must be handled, retrieved, transmitted, and read only by authorized personnel through proven secure channels.

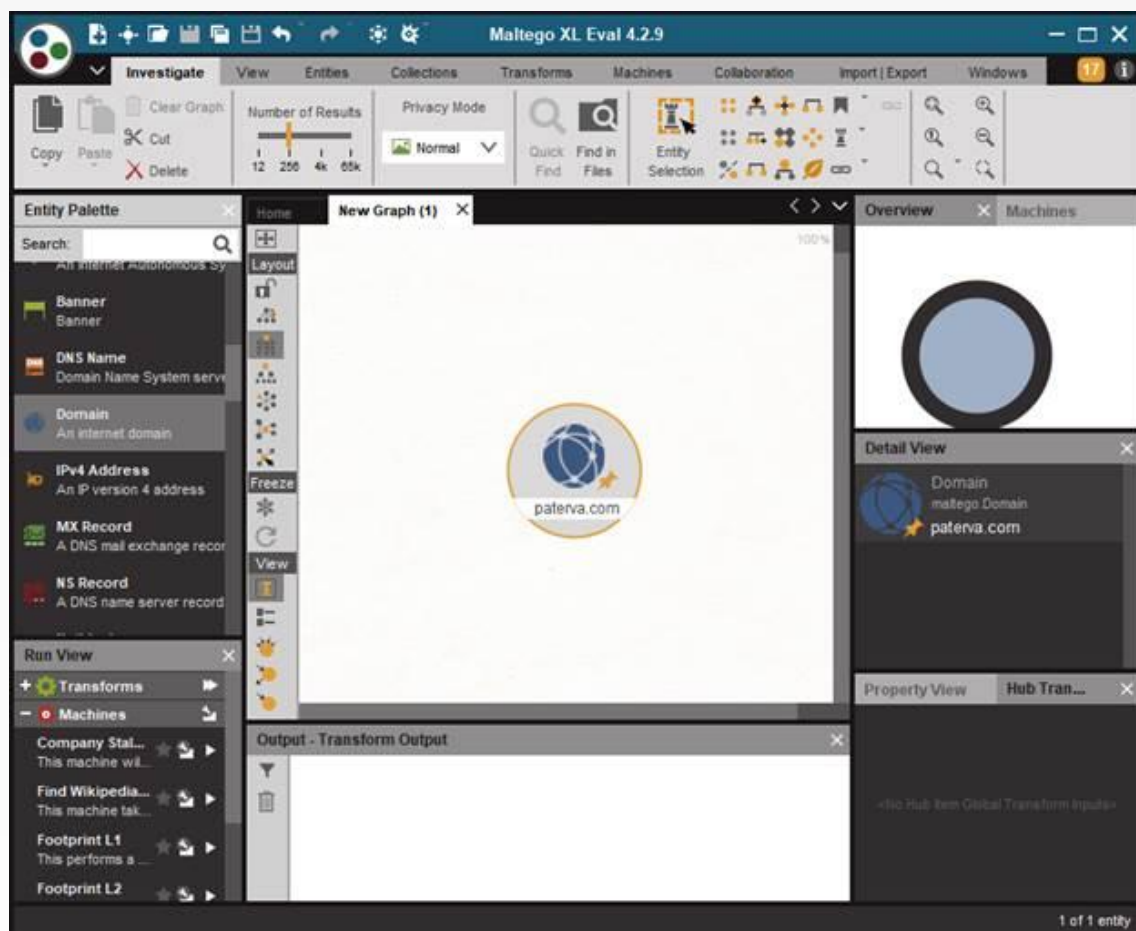
02

Cyber Academy L.L.C | Services and Products | info@cyberacademy.co | www.cyberacademy.co

Step 1: Creating Our First Entity in Maltego

In this guide, we will use GNU organization as an example, which is identified by the domain gnu[.]org.

To add an Entity for this domain to the graph, we first search for the Domain Entity in the Entity Palette, which is on the left of the window, and drag a new Entity onto the graph.



By default, Entities come with a default value. In our case, the Domain Entity has a default value of paterva.com. This can be changed by double clicking the Entity value (or pressing the F2 key with the Domain Entity selected) and changing the value to: gnu[.]org.

Terms of service

This document belongs to Cyber Academy L.L.C as its intellectual property. No part of this publication may be reproduced, stored in a retrieval system, or transmitted, in any form or by any means, without the prior permission in written form, except when used for internal business purposes of the client. The physical and digital copies of the report must be handled, retrieved, transmitted, and read only by authorized personnel through proven secure channels.

03

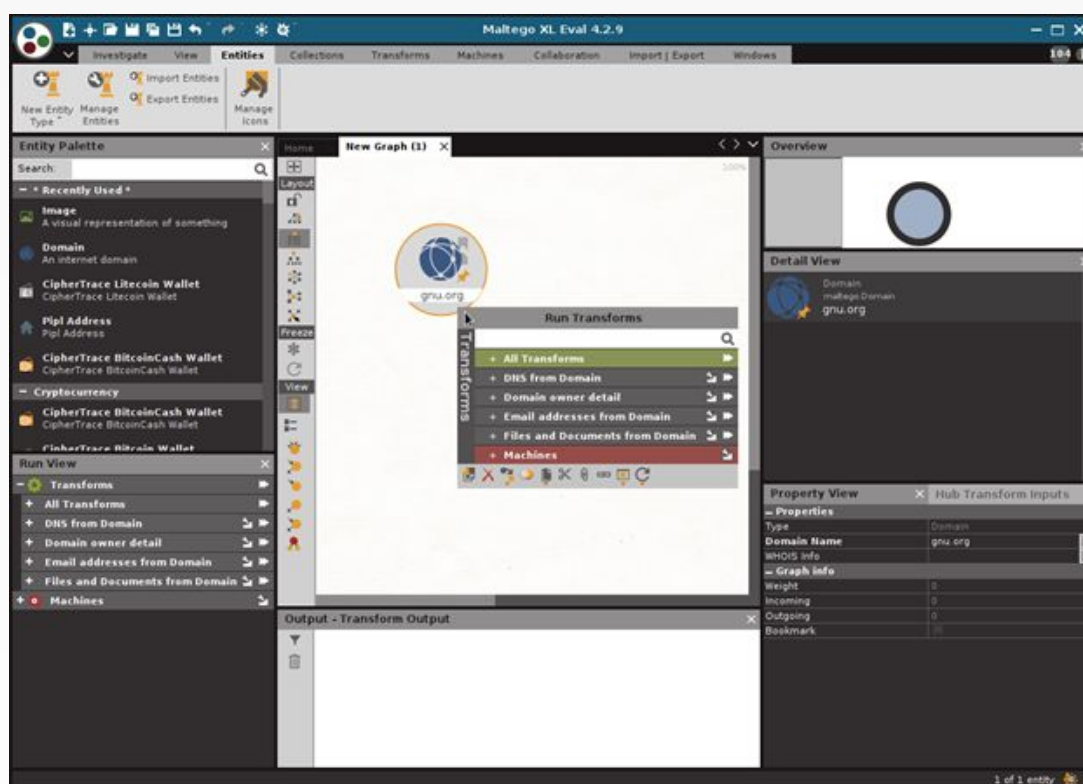
Cyber Academy L.L.C | Services and Products | info@cyberacademy.co | www.cyberacademy.co

Step 2: Running Maltego Transforms

What Are Transforms?

Transforms are functions which take an Entity as input and create new Entities as output. The output Entities are then linked to the input Entity. This is how a graph grows in Maltego. This could be compared to the way investigations are carried out: you start with some piece of information and you derive new pieces of information from it.

Each Transform accepts certain types of Entities as input. You can see the list of Transforms that can take an Entity as input by right-clicking anywhere on the graph with the Entity selected.



Terms of service

This document belongs to Cyber Academy L.L.C as its intellectual property. No part of this publication may be reproduced, stored in a retrieval system, or transmitted, in any form or by any means, without the prior permission in written form, except when used for internal business purposes of the client. The physical and digital copies of the report must be handled, retrieved, transmitted, and read only by authorized personnel through proven secure channels.

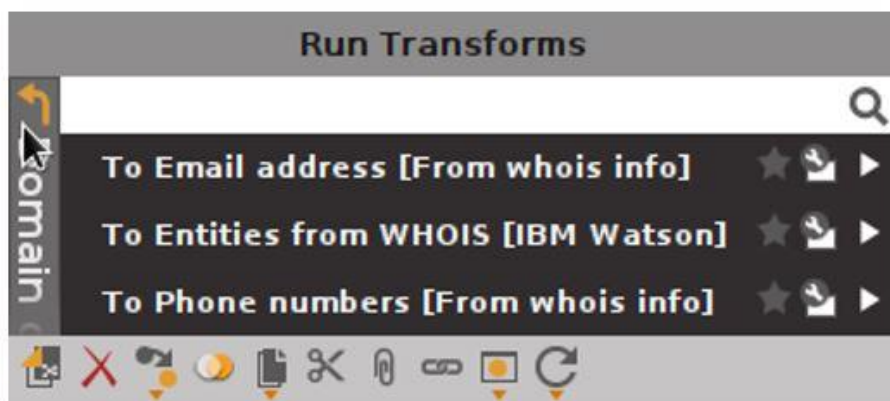
04

Cyber Academy L.L.C | Services and Products | info@cyberacademy.co | www.cyberacademy.co

You can now choose what Transform to run by selecting that Transform in the context menu.

If you know which Transform you want to run, you can search for it using the search box in the Run Transform menu.

Note the + in the menu options: it indicates a Transform Set, where related Transforms are grouped together. Clicking on the Transform Set will show the Transforms in that set. To go back, select the back arrow as shown below, or simply right-click anywhere in the Transform menu.



Terms of service

This document belongs to Cyber Academy L.L.C as its intellectual property. No part of this publication may be reproduced, stored in a retrieval system, or transmitted, in any form or by any means, without the prior permission in written form, except when used for internal business purposes of the client. The physical and digital copies of the report must be handled, retrieved, transmitted, and read only by authorized personnel through proven secure channels.