

01 | Finding items in multiple graphs

This article provides instructions on locating items such as Entities, links, keywords, and properties present in multiple graphs.

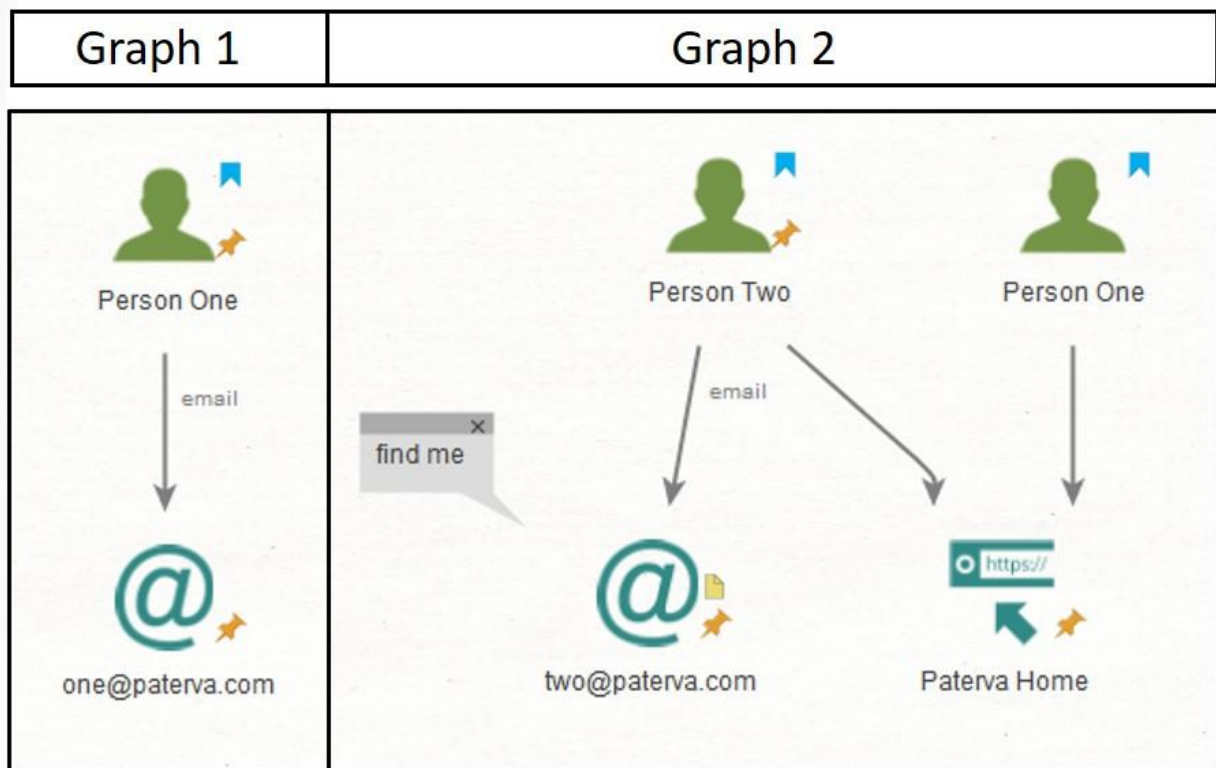
Often, while working on multiple graphs during an investigation, it becomes necessary to locate items across multiple graphs. This can be achieved in two ways:

- Selecting and copying Entities from one graph to another while noting common Entities.
- Using the feature 'Find in Files' to search items in saved graphs.

Using bookmarks: the select, copy, and paste method:

Firstly, let us work through how we can use the selection, copy, and paste method to find common Entities.

Consider the following graphs for example:



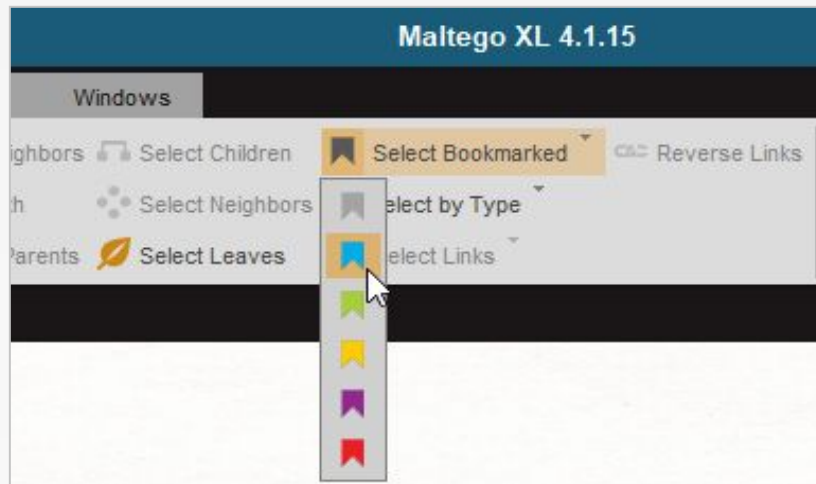
Step 1. Select 'Person One' from Graph1 by using a bookmark color and click the Investigate tab > Select Bookmarked

Terms of service

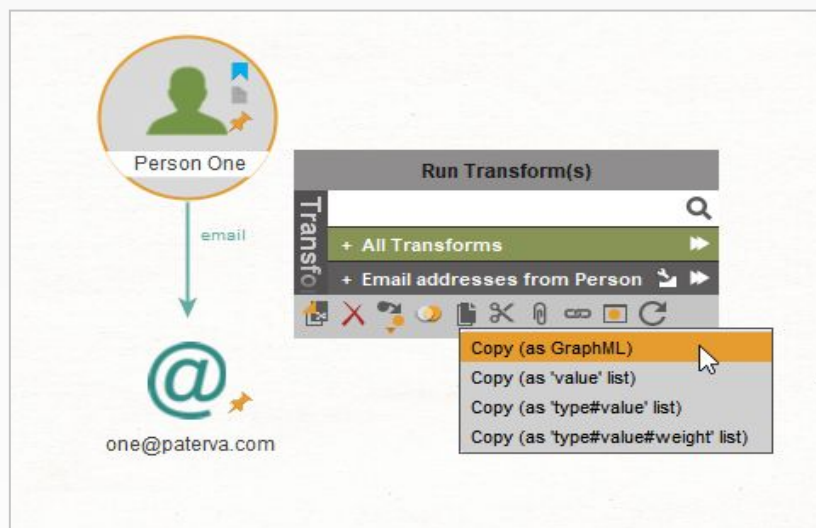
This document belongs to Cyber Academy L.L.C as its intellectual property. No part of this publication may be reproduced, stored in a retrieval system, or transmitted, in any form or by any means, without the prior permission in written form, except when used for internal business purposes of the client. The physical and digital copies of the report must be handled, retrieved, transmitted, and read only by authorized personnel through proven secure channels.

02

Cyber Academy L.L.C | Services and Products | info@cyberacademy.co | www.cyberacademy.co



Step 2. Right click on Graph1 > click 'Copy' > select 'Copy' (as GraphML)

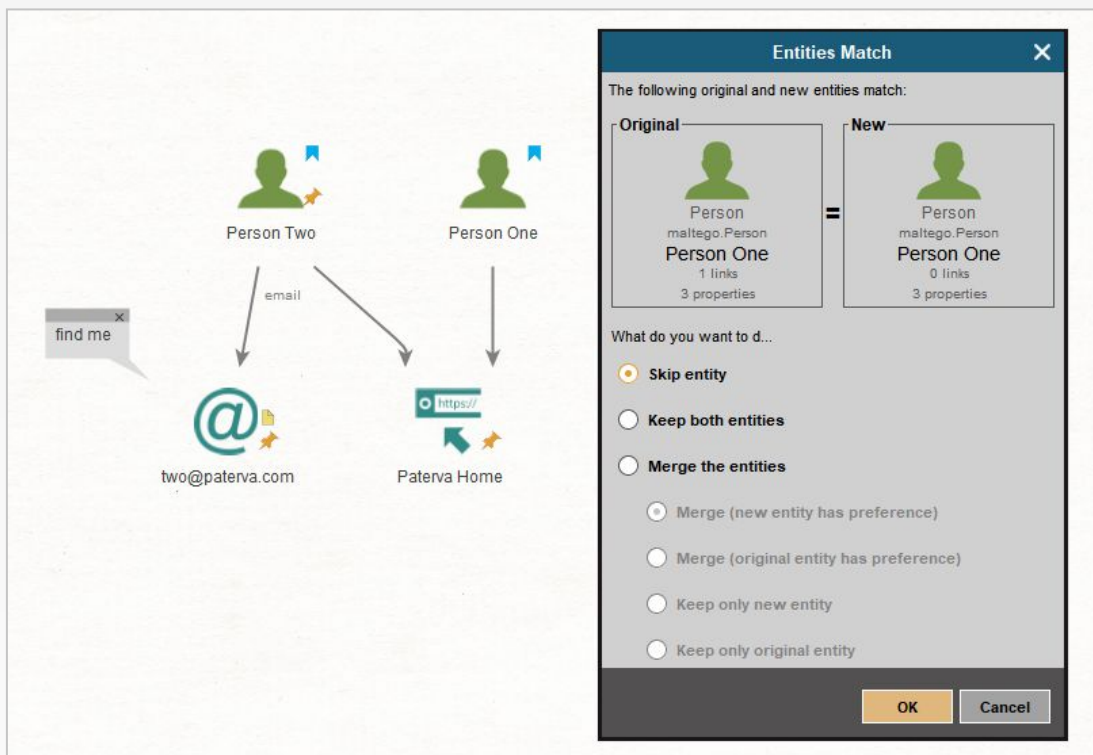


Step 3. Switch to Graph2 and press Ctrl+v to paste the copied GraphML. You will see a popup showing the matched Entities.

Terms of service

This document belongs to Cyber Academy L.L.C as its intellectual property. No part of this publication may be reproduced, stored in a retrieval system, or transmitted, in any form or by any means, without the prior permission in written form, except when used for internal business purposes of the client. The physical and digital copies of the report must be handled, retrieved, transmitted, and read only by authorized personnel through proven secure channels.

03 | The “Find in Files” method



The "Find in Files" method

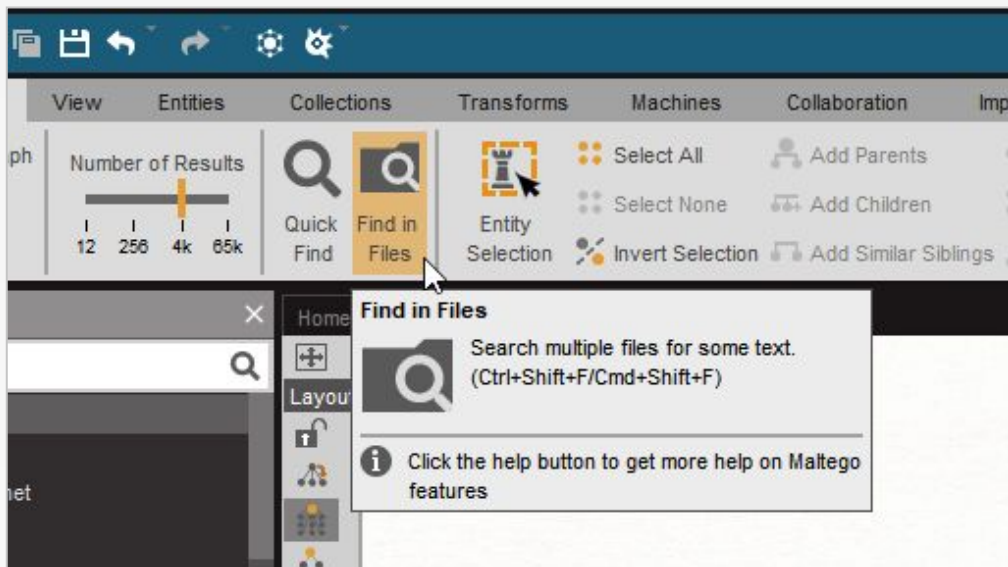
In addition to the first example, we can find emails, notes and links in multiple saved graphs with the help of the "Find in Files" feature. Note that using the 'Find in Files' feature first requires that all open graphs are saved to the file system.

Terms of service

This document belongs to Cyber Academy L.L.C as its intellectual property. No part of this publication may be reproduced, stored in a retrieval system, or transmitted, in any form or by any means, without the prior permission in written form, except when used for internal business purposes of the client. The physical and digital copies of the report must be handled, retrieved, transmitted, and read only by authorized personnel through proven secure channels.

04

Step 1. Select the option 'Find in Files' from the Investigate tab.



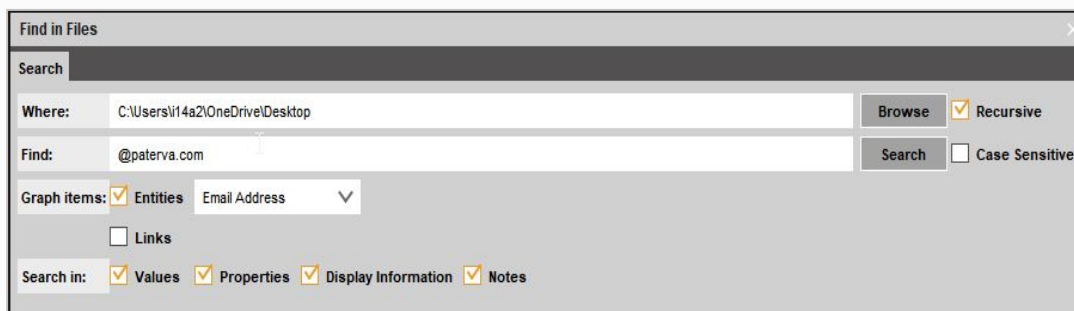
Step 2. Fill in search parameters to find all emails ending with '@paterva.com' and click Search

Where: location in file system where the graphs are saved.

Find: piece of string that has to be found.

Graph items: '@paterva.com' is an Entity, check-mark Entities and select 'Email Address' from the dropdown menu.

Search in: Check mark all options to find '@paterva.com' in places other than the value of Entity itself.











Terms of service

This document belongs to Cyber Academy L.L.C as its intellectual property. No part of this publication may be reproduced, stored in a retrieval system, or transmitted, in any form or by any means, without the prior permission in written form, except when used for internal business purposes of the client. The physical and digital copies of the report must be handled, retrieved, transmitted, and read only by authorized personnel through proven secure channels.

05

Step 3. Results found will be displayed as a list. Double clicking the result will take you to that Entity.

Find in Files						
Search		Results				
		Match Info	Author	Date Created	Date Modified	Location
 Graph1.mtgi	1 matches			Jan 21, 2019 12:51:18 PM	Jan 25, 2019 12:25:21 PM	C:\Users\i14a2\OneDrive...
 @one@paterva.com	Value:one@paterva.com					
 Graph2.mtgi	1 matches			Jan 21, 2019 12:52:37 PM	Jan 25, 2019 12:25:23 PM	C:\Users\i14a2\OneDrive...
 @two@paterva.com	Value:two@paterva.com					

Step 4. Similarly we can find text in notes.



Find in Files	
Where:	C:\Users\i14a2\OneDrive\Desktop
Find:	find me
Graph items:	<input checked="" type="checkbox"/> Entities <All> <input type="checkbox"/> Links
Search in:	<input checked="" type="checkbox"/> Values <input checked="" type="checkbox"/> Properties <input checked="" type="checkbox"/> Display Information <input checked="" type="checkbox"/> Notes
Browse	<input checked="" type="checkbox"/> Recursive <input type="checkbox"/> Case Sensitive
Search	

Results:

Find in Files

Search

Results

	Match Info	Author	Date Created	Date Modified	Location
 Graph2.mtgi	1 matches		Jan 21, 2019 12:52:37 PM	Jan 25, 2019 12:25:23 PM	C:\Users\i14a2\OneDrive...
 @two@paterva.com	Notes:find me				

Notes:find me

Terms of service

This document belongs to Cyber Academy L.L.C as its intellectual property. No part of this publication may be reproduced, stored in a retrieval system, or transmitted, in any form or by any means, without the prior permission in written form, except when used for internal business purposes of the client. The physical and digital copies of the report must be handled, retrieved, transmitted, and read only by authorized personnel through proven secure channels.

Step 5. To find links, use parameters similar to these.

Find in Files

Search

Results

Where:

C:\Users\i14a2\OneDrive\Desktop

Browse

Find:

email

Search

Graph items:

☐ Entities

<All>

☒ Links

Search in:

☒ Values

☒ Properties





☒ Display Information

☒ Notes

☒ Recursive

☐ Case Sensitive

Results:

	Match Info	Author	Date Created	Date Modified	Location
 Graph1.mtgi	1 matches		Jan 21, 2019 12:51:18 PM	Jan 25, 2019 12:25:21 PM	C:\Users\i14a2\OneDrive...
 email	Value:email				
 Graph2.mtgi	1 matches		Jan 21, 2019 12:52:37 PM	Jan 25, 2019 12:40:53 PM	C:\Users\i14a2\OneDrive...
 email	Value:email				

Terms of service

This document belongs to Cyber Academy L.L.C as its intellectual property. No part of this publication may be reproduced, stored in a retrieval system, or transmitted, in any form or by any means, without the prior permission in written form, except when used for internal business purposes of the client. The physical and digital copies of the report must be handled, retrieved, transmitted, and read only by authorized personnel through proven secure channels.