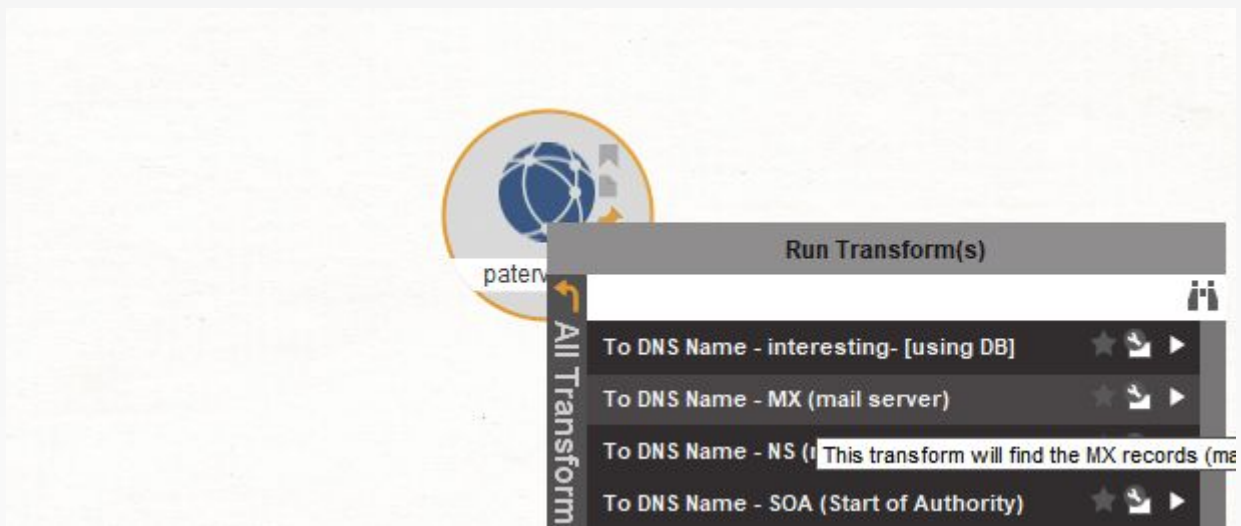


01 | Running a Transform

When right-clicking anywhere on your graph, **the context menu** will appear.

The list of Transforms shown are filtered depending on what Entities you have selected. E.g. selecting an email address on your graph will only show Transforms that take an email address as an input.

Left-click on the Transform to run it.



Transform progress

When running a Transform, a progress bar will appear in the bottom-right corner of the screen.

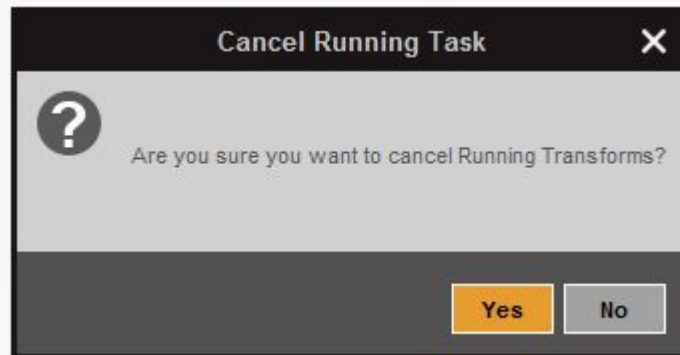


When running multiple Transforms on multiple Entities the progress bar will give an indication of the overall progress of all Transforms.

02

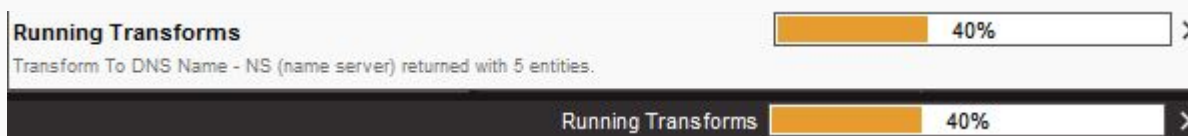
Cyber Academy L.L.C | Services and Products | info@cyberacademy.co | www.cyberacademy.co

The [X] (far right of the status bar) allows you to easily cancel all Transforms that are currently running (for example – if you have selected the incorrect Transform and don't want the results to distort your graph with irrelevant Entities). To cancel a running Transform, simply select the [X] at the bottom of the screen. You will then be given a confirmation dialog that looks as follows:



By simply selecting Yes you can cancel the running Transforms. Selecting No will allow the Transforms to complete as usual.

When running multiple Transforms, you can click on the Transform progress to see which Transform is currently running:



A maximum of 10 Transforms will run at once in Maltego One and a maximum of 5 for other Client editions. Additional Transforms will be queued until the earlier Transforms have completed.

This article can be found in

<https://docs.maltego.com/support/solutions/articles/15000009613-running-a-transform>

James David

james.david@maltego.com

Terms of service

This document belongs to Cyber Academy L.L.C as its intellectual property. No part of this publication may be reproduced, stored in a retrieval system, or transmitted, in any form or by any means, without the prior permission in written form, except when used for internal business purposes of the client. The physical and digital copies of the report must be handled, retrieved, transmitted, and read only by authorized personnel through proven secure channels.